

Edmonton, Alta cds (AP 9 94) ties 3c SQ, corner folds on cover to Brantford, Ont. inv. #23805 \$35



#39 6¢ SQ with light bullseye cancel on cover (trimmed, docketing, glue on back) from Calgary to Toronto (AU 28 1884). Dominion Land office handstamp. Inv. #43156 \$120



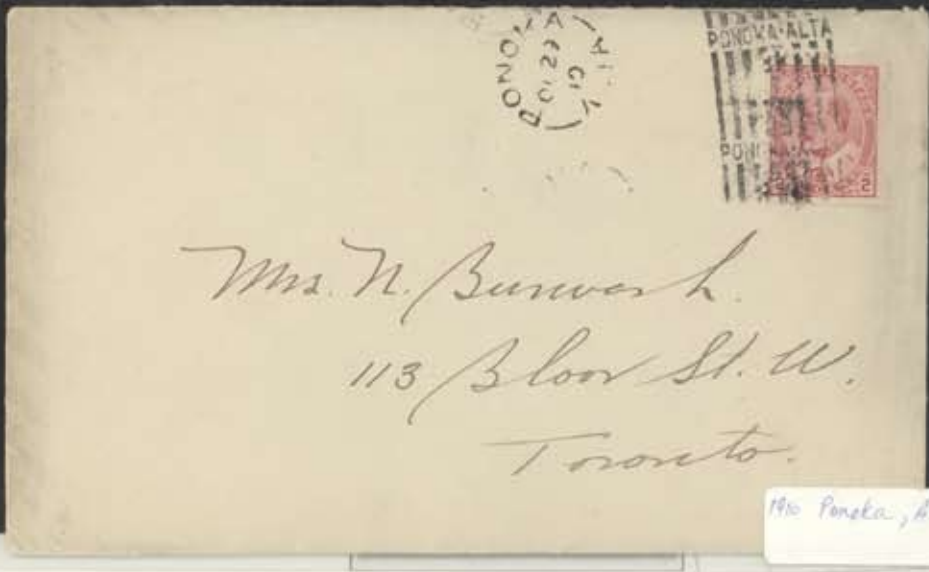
1926 Banff Winter Sports Globe slogan cancel \$15



1909 Millet, Alta \$75



1911 Morning side, Alta B. W. General \$45-



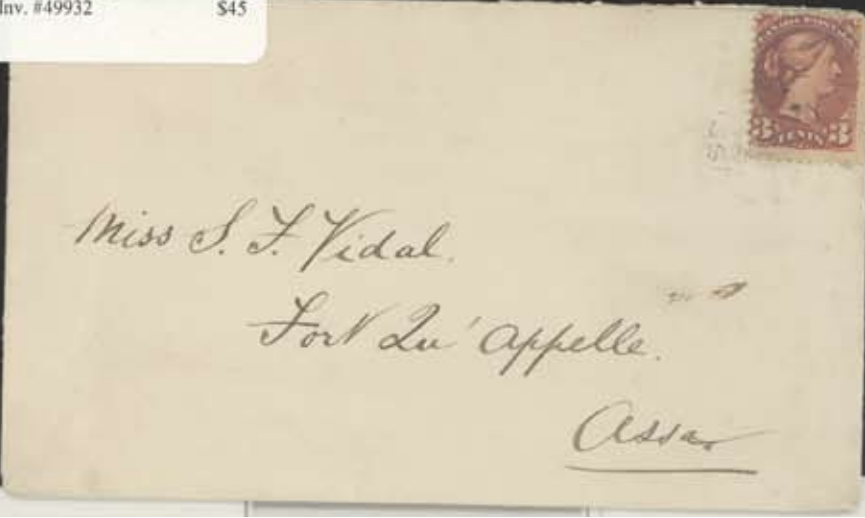
1910 Ponoka, Alta Rider \$175

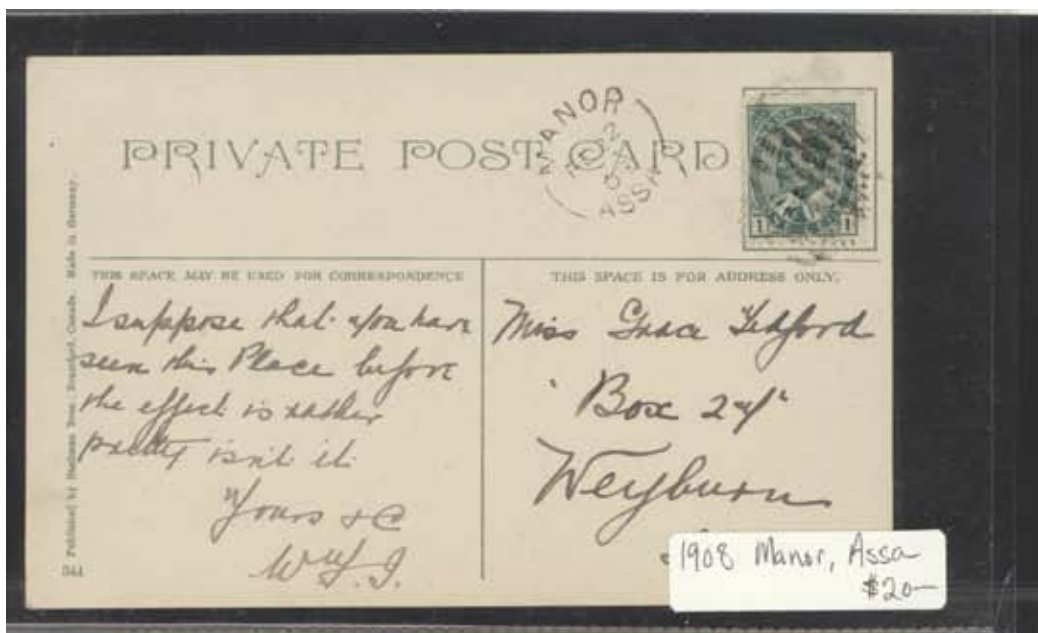
Red Willow (1906) on 2c Edward cover. A small PO (1903-1912). \$30

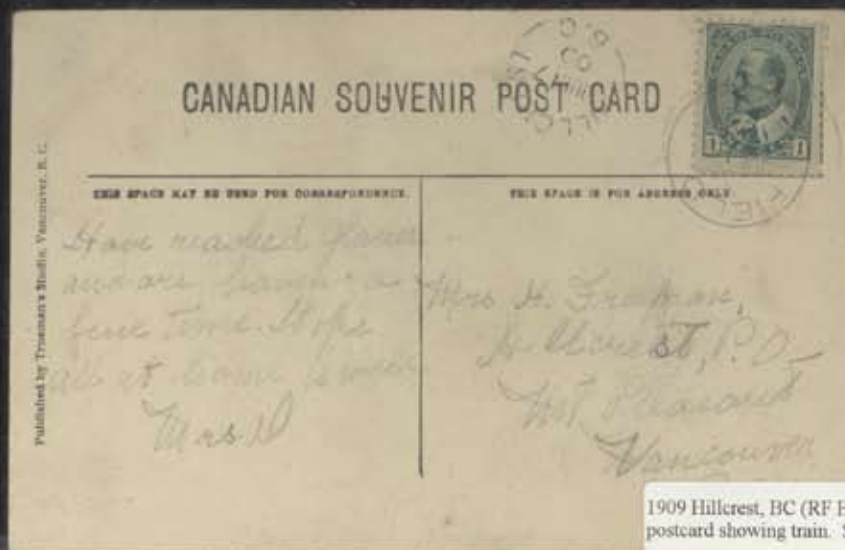




#41 3c SQ tied by Lebret, ASSA split ring (No 16 96) on cover to Fort Qu'Appelle, ASSA bs to Miss S F Vidal. Inv. #49932 \$45

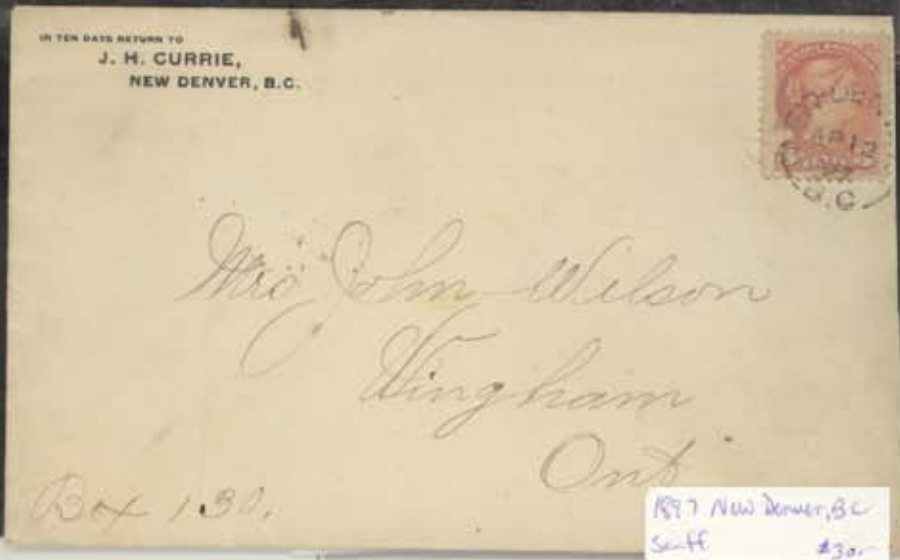






1909 Hillcrest, BC (RF E) on postcard showing train. \$90

#89 1¢ Edward tied by Vancouver, BC machine cancel (Dec 6 09) on "Vancouver Horse Show private post card" to Listowel, Ont, reverse with view of indoor track. Inv. #49574 \$50



1908 Str Princess May. #89 2¢ Quebec tied by RPO S-24b "VANCOUVER & SKAGWAY RPO STR. PRINCESS MAY" magenta oval on postcard, paying 2¢ UPU postcard rate to London, England. Inv. #9515 \$250



1909 SS Camusun. #89 1¢ Edward tied by purple oval "VANCOUVER & PRINCE RUPERT S. CAMUSUN" (JAN 5 1909) on photoview postcard Shawatlans Lake, BC via Vancouver (Jan 6) Cleveland, Ohio. Inv. #9506 \$200



1895 Victoria, BC squared circle, 3
x 1¢ SQ, to Portland, OR. \$30



Nanaimo to Germany. 1c, 2c Numeral tied by
Nanaimo, BC duplex on 2c stationery to
Hamburg, Germany bs paying 5c UPU letter rate.
Inv. #81269 \$100



paid 14

Robert Fulton Esq
Secretary's Office
Fredericton

RICHIBUCTO

SFC Richibucto NB Star hs to Freder., ms "Paid 1N", docketing May 15 1839. Ex Siverts. \$150

SFL St. Andrew, NB dateline Oct 20 1841 to St. George, ms rated "3"d collect with blue St. Andrew, NB star. Inv. #3853 \$100

3

Oct 20 1841

J. Stewart

J. & G. Knight
St. George
or Penfield

St. Andrew

GAGETOWN-N.B.

PAID 3d

Miss Mary C. Simpson
in care of G. D. Bailey
Newcastle

SC red Gagetown NB Paid hs with circular "Paid 3d" insert to Newcastle. \$150



SFC (1842) with Dalhousie NB
Paid, rated "1N3" to Fredericton
bs (OC 4 1842). \$75

1861 1¢ Train on Circular. #8 1¢ Train on printed
circular from St. John, NB (1861) to Miramichi.
Inv. #9397 \$250



SFL May 1 1858 Salisbury, NB bs to
Sussex Vale bs, with red "Salisbury NB"
Paid, insert "PAID 3 d". Inv. #42026 \$75



#141, #142 1c, 2c Confed. tied by Fort Ross, NWT cds (SP 15 41) on HBC cover to Fort Ross with "Eastern Arctic Patrol R.M.S. CANADA" bs (SP 15 41). The latest known use of the Canada cds. Inv. #40162 \$180

Hudson's Bay Company.
INCORPORATED 21ST MAY 1870



Dr Russell J Tickle,
R.M.S. "Nascopie",
FORT ROSS.
SOMERSET ISLAND.
NORTH WEST TERRITORIES.
CANADA.

EASTERN ARTIC PATROL. 1941.

CLYDE RIVER

NON P. O. POINT.



M. Pasichniak
367 Dufferin Ave.
Winnipeg, Man.
Canada

1939 Nascopie Non PO
Point, Clyde River. \$45

#61-63 1¢, 2¢, 3¢ Discovery of
Newfoundland tied by St. John's cds (NO 5
97) on cover to Boston, USA, vertical cover
fold not affecting stamps. Nice 3 colour
franking. Inv. #49675 \$75



1941 Newfoundland Censor #10 with
C.N. Steamships backlap. Likely
mailed by soldier on arrival UK. \$25



1909 Harbor Grace to Boston, Mass. \$25



\$30



\$30

